

How to install?
 Answer: You should fix the antenna on a desired position. First, turn on the TV to search channels and adjust the angle of the antenna until the screen is clear enough.

How to confirm that the antenna is working Properly?
 Answer: Connect the antenna with power supply, make sure the indicator light lights on. Then plug the antenna into the tuner of your TV and make sure there are input signals.

What should you do when the antenna indicator light is off?
 Answer: If the light does not light on, please check whether the connector is loose, the plug is not inserted or stuck it wrong.

How do you do when your TV signals are not strong?
 Answer: Check if the antenna is powered normally. If the power indicator lights light on, you should adjust the antenna position and direction for the best reception, then resource the channels.

What if I can not receive a signal with antenna?
 Answer: Signal strength will vary based on certain variables, such as distance from the transmitter, hills, buildings, and even tall trees can impact reception. To check the exact distance from your residence to the nearest transmitters, and get an idea of what to expect in the way of reception, go to antennapoint.com antennaweb.org and type in your zip code.

Will it fit all Televisions?
 Answer: The antenna will connect with televisions that have an antenna IN or a Cable IN port on the back of the television. Most televisions (HDTV) sold after 2009 have a ATSC tuner built-in and will receive digital broadcasts. If your television was purchased earlier, but has a menu option for scanning digital channels, then your television has a ATSC tuner. If not, you will need to purchase a digital receiver.

Are all broadcasts now in High Definition?
 Answer: Not all digital signals are High Definition. Ensure your digital receive is a HD receiver, otherwise no HD channels can be viewed.

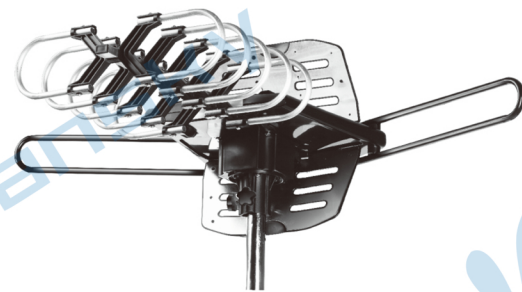
Warranty:
 Our company provide customer with a warranty of 12 months from the date of purchase.

Contact us:
 Email : support@vanskytek.com
 Vansky Network Technology Co., Ltd



150 miles Outdoor Rotating TV Antenna

User Manual



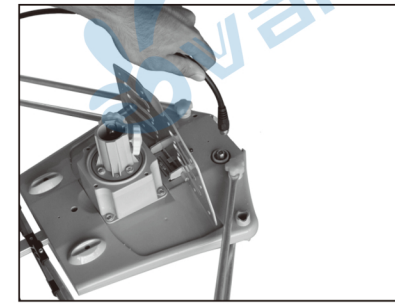
FREE access to TV broadcast channels in full 1080p HD!



VS-OTX01

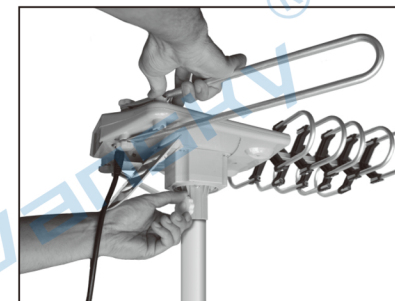
MADE IN CHINA

P4: Connect Signal Line

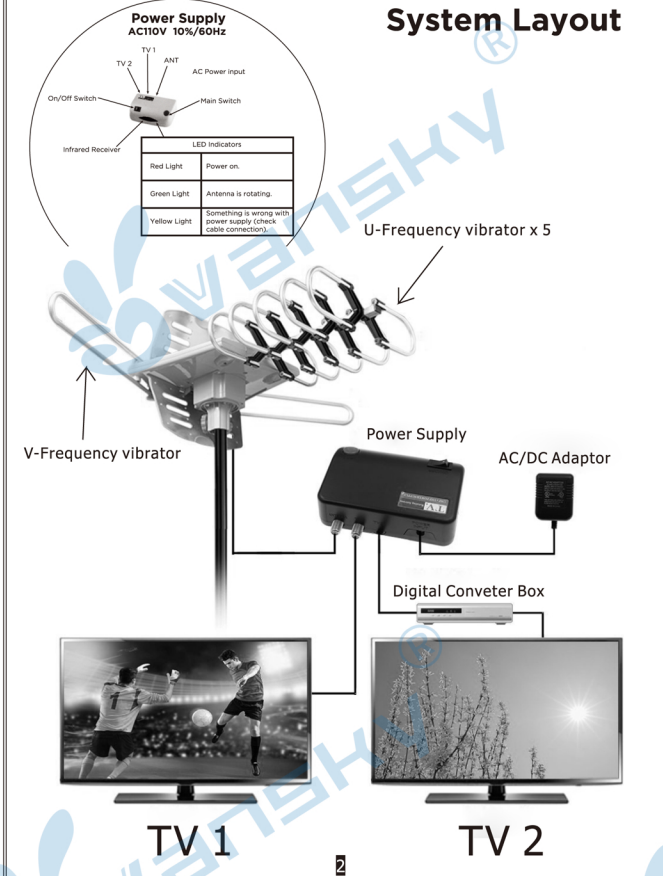


Connect the coaxial signal line and tighten the fastener.

P5: Secure Antenna



Place Antenna onto pole and tighten Main Pole Column.
 *Give 50 cm radial clearance to allow rotation.
 *Pole is not included.



页1

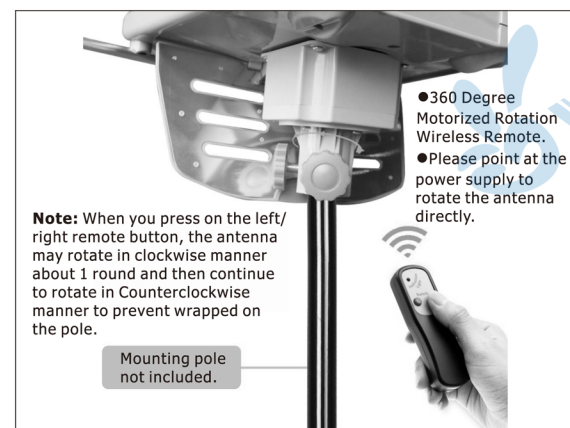
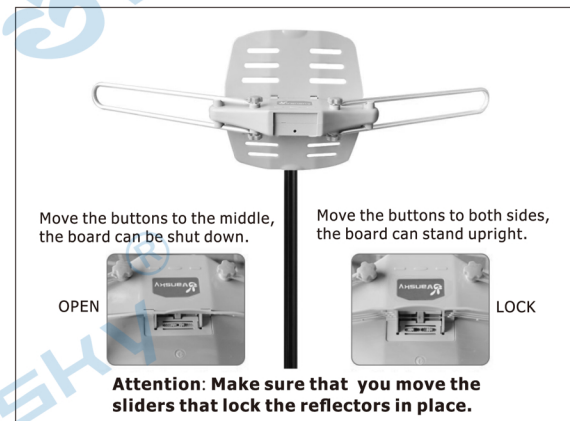
页6

页3

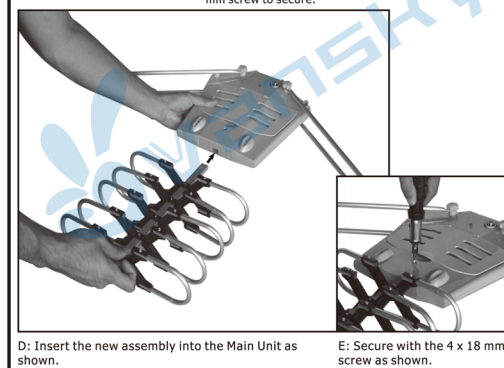
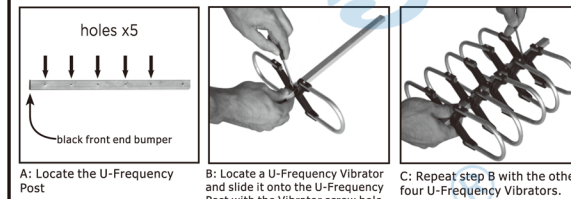
页4

Package Contents

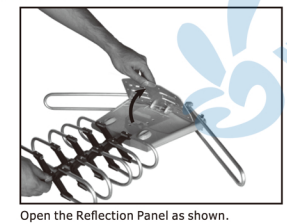
NO.	NAME	Qty.	Image
1	Main Unit	1	
2	Main Pole Column	1	
3	Motor-Fixed Bolster	1	
4	U-Frequency Post	1	
5	U-Frequency Vibrator	5	
6	Screw (3 x 10mm)	5	
7	Screw (4 x 12mm)	8	
8	Screw (4 x 18mm)	1	
9	Power Supply	1	
10	Remote Controller	1	
11	33 ft Coaxial Cable	1	
12	Power Adapter	1	
13	Coaxial Cable Gasket	1	
14	Instruction	1	



P1: Install U-Frequency Vibrators



P2: Open Reflection Panel



P3: Install Motor Rotor

